

# PARKING

R H I N O *LIFT*



7000  
LBS



# PARKING RHINO LIFT

Our new Parking Lift ramp offers a full guarantee. It is designed to solve all space and safety problems. It has a hydraulic system that allows its operation in the most exposed and heavy-duty conditions. Its aesthetic and innovative design facilitates its installation in places such as condominiums or parking lots.



Anchoring  
Method:  
Expansion  
Sleeve / Bolt

## TECHNICAL SPECIFICATIONS



Voltage: **110 / 220**  
Volts AC



Operation:  
**Electrohydraulic**



Safety Locks:  
**Electromechanical**



Lifting time  
min. speed:  
**30** seconds



Top safety  
locks:  
**135**mm



# Dimentions

SPACE OPTIMIZATION

## DESCRIPTION

A | **8.36'**  
Overall width

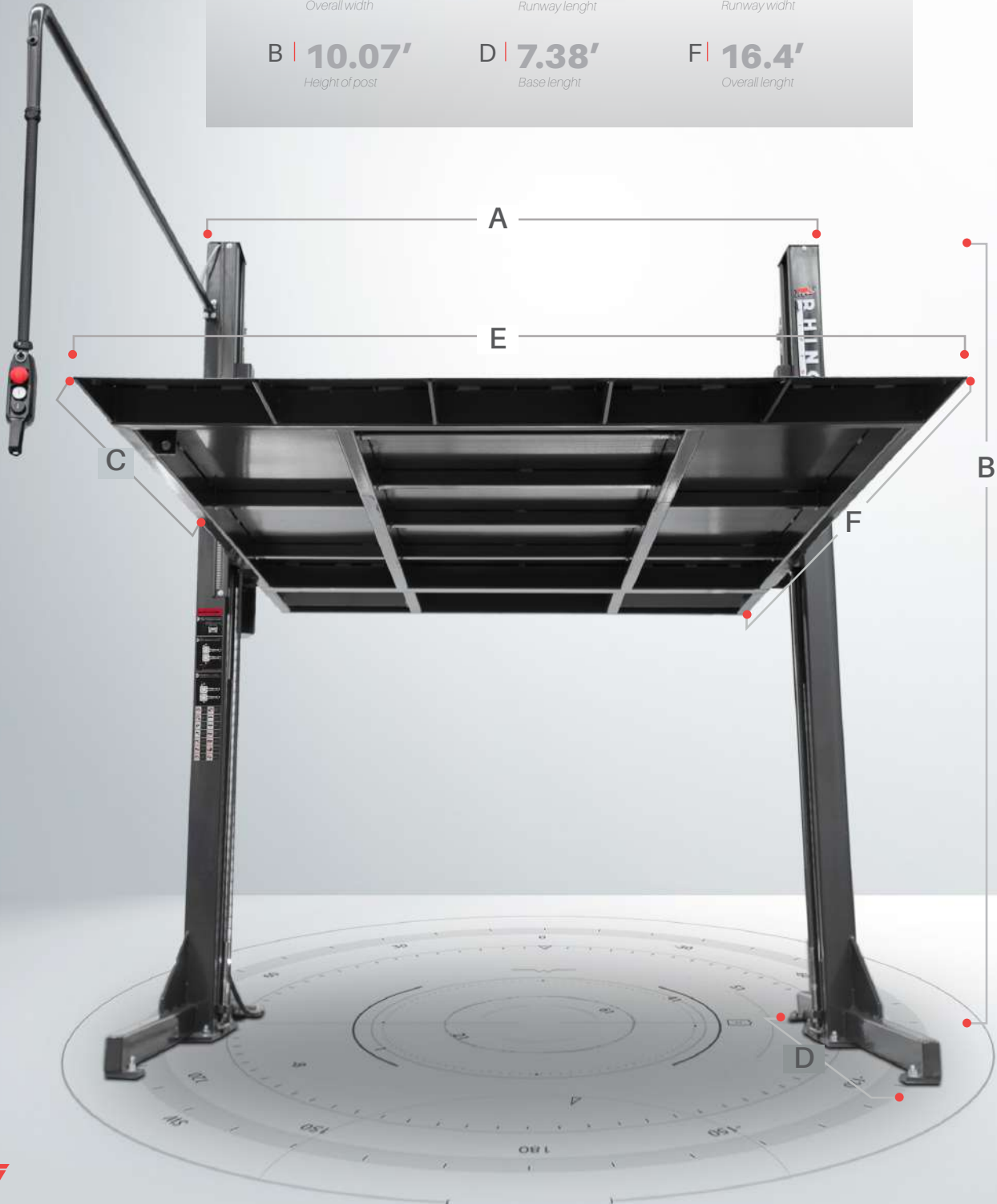
C | **12.30'**  
Runway length

E | **6.89'**  
Runway width

B | **10.07'**  
Height of post

D | **7.38'**  
Base length

F | **16.4'**  
Overall length





# Total safety

THE BEST SAFETY FEATURES

The ramp has components that provide maximum safety to the cars. In perfect balance, its hydraulic system, its structural system, its fall protection, among others, facilitate its constant operation and the total protection of the cars. All our materials are first class, and are certified under rigorous standards that allow the excellent operation.



## LOCK LADDER

Locking positions every 2 inches



## CERTIFIED SLACK CABLE

Heavy duty slack cable, holds over 22 tons

## DOUBLE SECURITY SWITCH AND LEVEL CALIBRATION DEVICE

Allows perfect runway leveling and stop level definition according to each customer requirement, is redundantly safe, and is IP66 certified.

IP 65

Made in Italy





# Minimum heights

PERFECT FIT



SUV'S - TRUCKS  
SUV'S - TRUCKS

## 14.10'

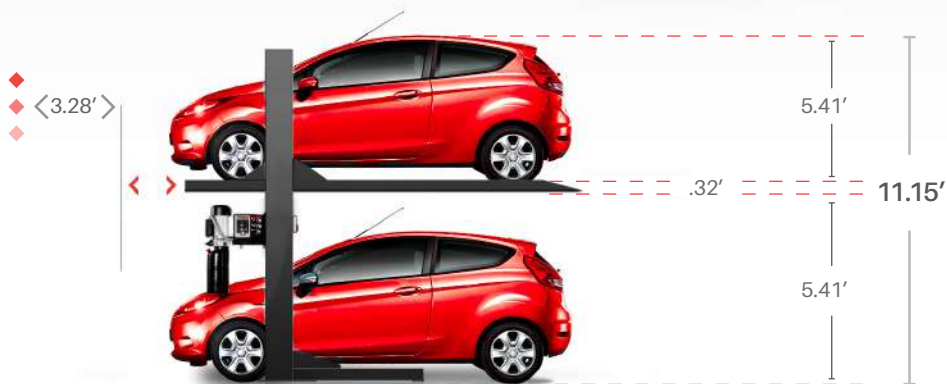
fourteen point ten feet



CAR / TRUCKS  
SUV'S

## 12.63'

twelve point sixty three feet



CAR  
CAR

## 11.15'

eleven point fifteen feet

NOTICE: Estimated dimensions, applicable only in 84% of cases, heights may vary depending on each car model.



# Components

PERFECT FIT

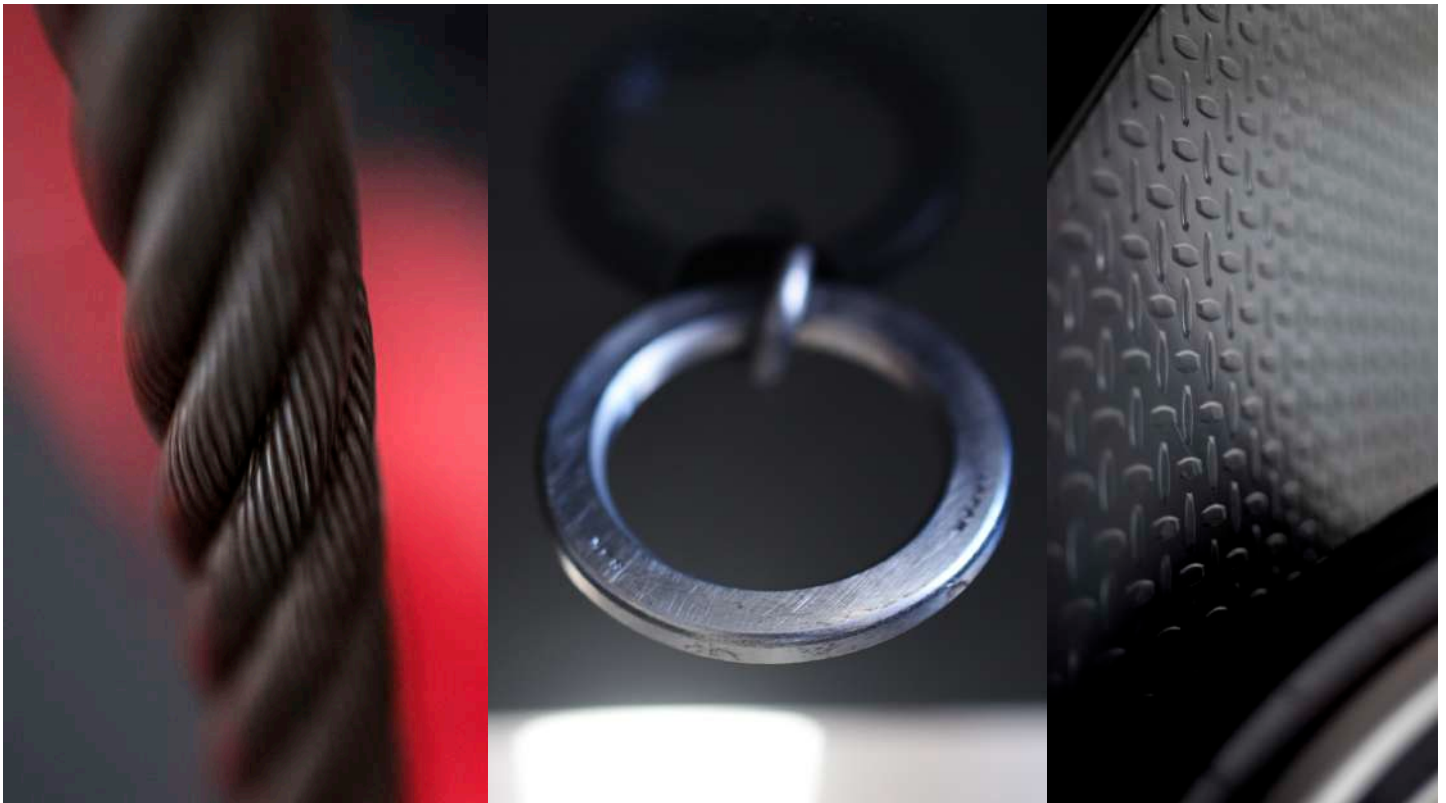
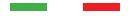
## CONTROL BOX AND LOCKABLE EMERGENCY STOP BUTTON

Electrical wiring, protected with flexible metal conduit and safety guards.



IP 63

Made in Italy





# Central distributor

LATEST TECHNOLOGY FEATURES

Central unit: Used to control and operate the equipment and the safety features.

## HYDRAULIC UNIT

Horsepower

**2hp/ 3hp**

Minimum lifting speed

**48s / 30s**

Electrical input

**110 vca / 220 vca**

*made in Italy*

Neutral phase and physical ground

**1/ 2**

Consumption Amps

**18.5 / 16**

Consumption watts

**1.5kW / 2.25kW**

Oil ISO 68Z zt, aluminum lift valve, and NPT ports

## CONTROL PANEL

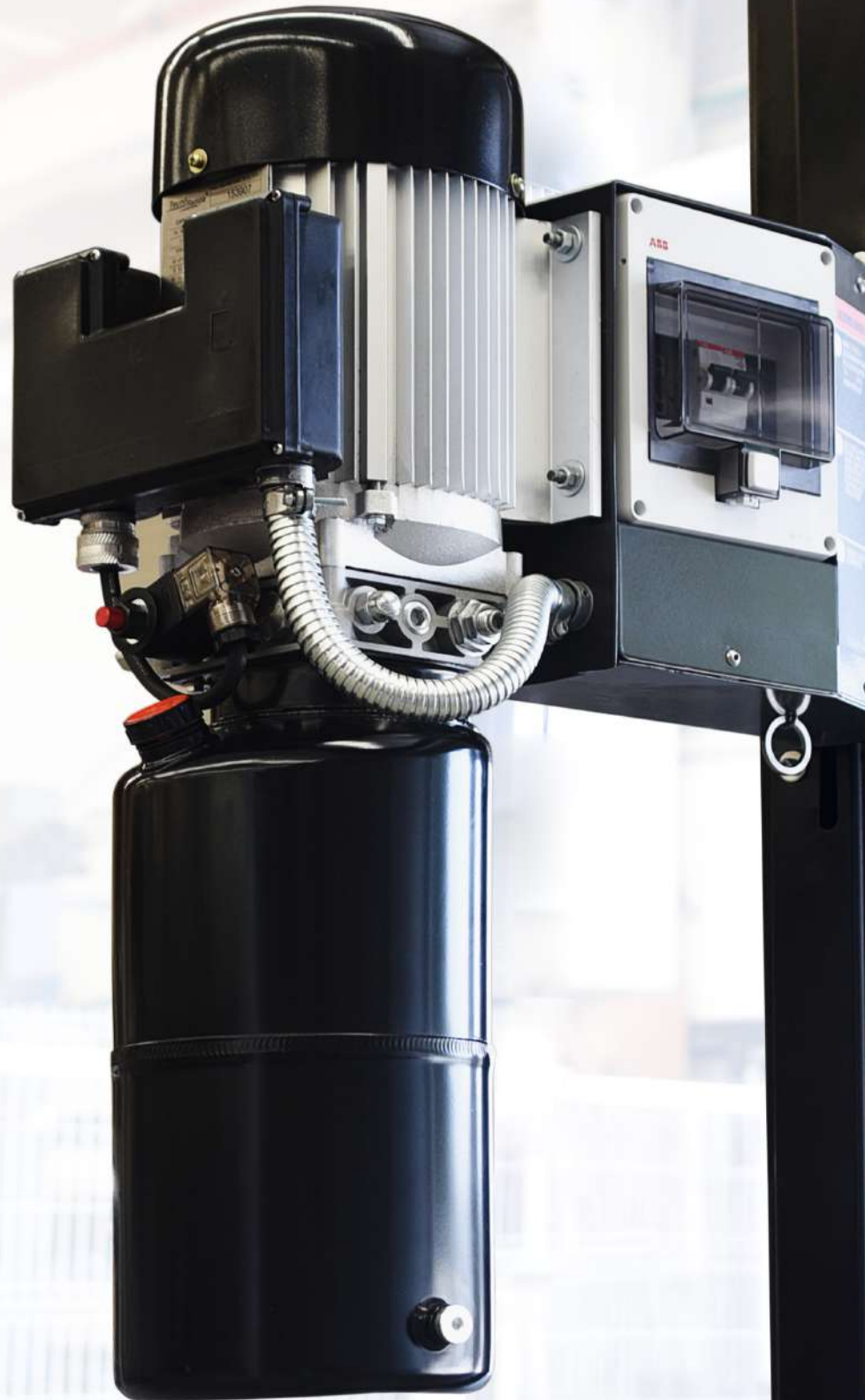
Airtight Input protection for outdoor use  
Transparent polycarbonate cover

**Break** ⚡

*20 amp for 3hp*

*25 amp for 2hp*

Optional upgrade is available using the latest technology accessories.

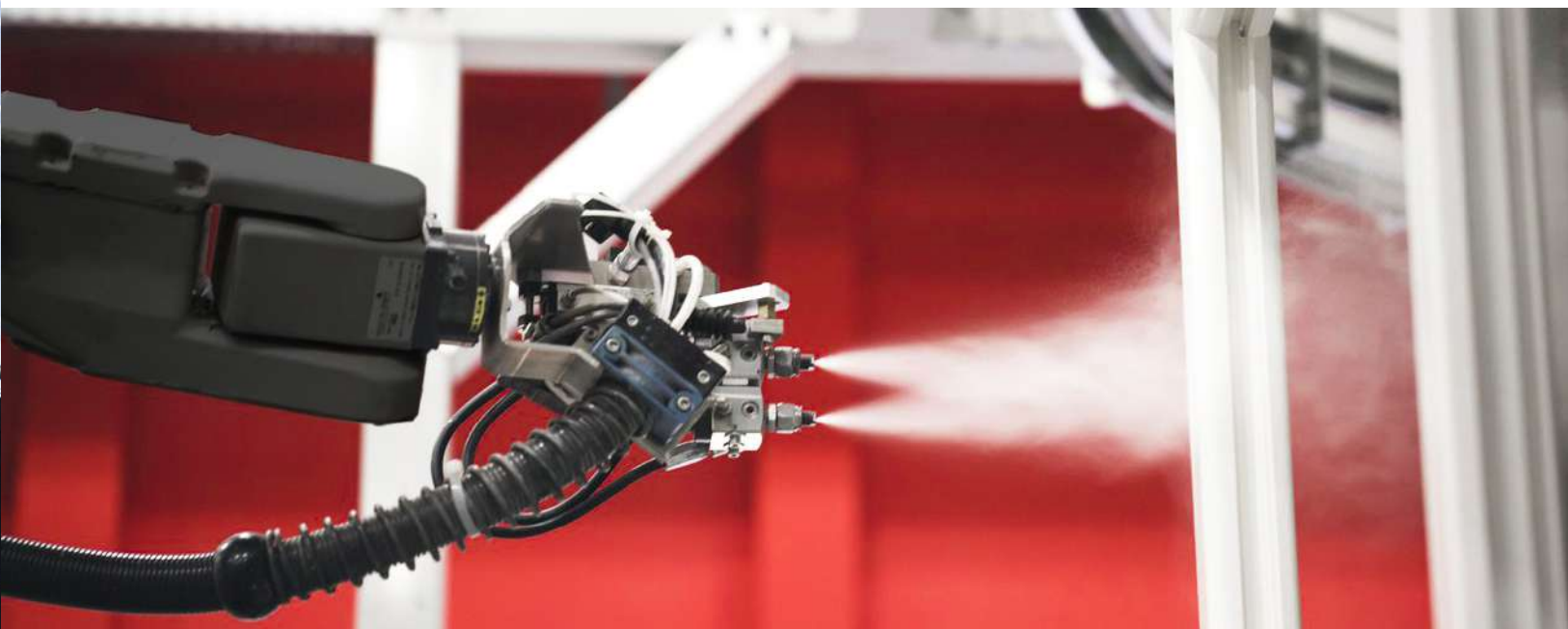






# **Electrostatic painting**

Our products combine excellence and design. Our Parking Lift has an organic electrostatic paint which is friendly to the environment. Its materials are highly resistant and adapt to any inclement weather.



## CERTIFIED ELECTROSTATIC PAINTING



Manufactured with organic materials.



Eco-friendly.



Better colors, resistance, flexibility, and superior finishes.



# High Weather Resistance

## FLOOD DAMAGE-RESISTANT

We apply the latest in IP technology that offers maximum protection to the elements and protects all the components from the most aggressive environments. Also maintains its durability in perfect conditions for a long time.

**A** | CONTROL PANEL  
**IP 65**

**B** | SAFETY MICRO SWITCH  
**IP 66**

**C** | MAIN DISTRIBUTOR

**D** | LOCK LADDER

**E** | HYDRAULIC CYLINDERS

# PROTEGIDO CONTRA AMBIENTES AGRESIVOS



GALVANIZED ELEMENTS AND  
ELECTROSTATIC PAINTING



# Maximum door opening angle

MORE SPACE FOR CAR ACCESS



We renewed the structural system, clearing the frontal face of the runway, making a bigger area for door opening.

# Installation

## REQUIREMENTS FOR INSTALLATION



### DEEP FOUNDATION

For a proper installation, it is required to use concrete with a  $f'c = 250 \text{ kg/cm}^2$  and a 15 cm thick shed with a welded grid of steel.

### ELECTRICAL POWER SUPPLY

Voltage

**110 / 220**  
Volts AC

Electric current

**35 Amp**

Electrical wiring

**10 Awg** <sup>1), 2)</sup>

1) 8 AWG for distances up to 10m  
2) 6 AWG for distances up to 15 m

### RECOMENDATIONS

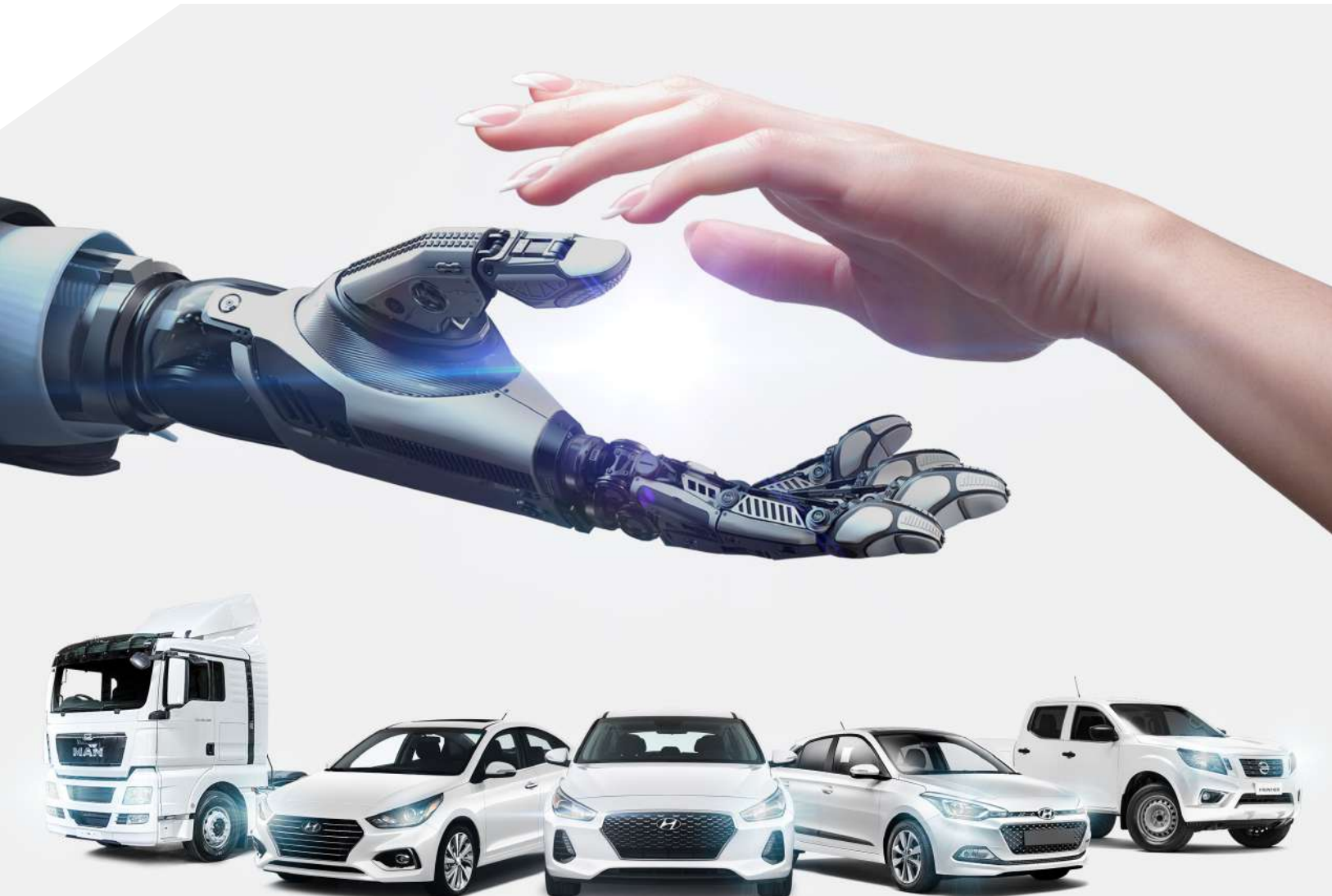
- ◆ For distances bigger than 15 m, output of 110V AC and 37 Amp consumption.
- ◆ Install a 30 Amp circuit breaker for every 2 car lifts.



## 24 HOURS OF CUSTOMER SUPPORT

Contact: (877) 364-6463

- ◆ Highly qualified technicians provide personalized attention.
- ◆ Lifting on site.
- ◆ Customized mechanical guides.
- ◆ Operation and maintenance training for your staff.
- ◆ On-site direct certification course at no additional cost.
- ◆ Guaranteed availability of spare parts.
- ◆ 24-hour service units.
- ◆ Drawing of plans in AutoCAD and assembly of ramps.





# About our company



FULL SOLUTIONS

We are **LEADING AND CERTIFIED COMPANY** for the manufacture of competitive electrohydraulic equipment worldwide. We distinguish ourselves by providing full solutions that improve the quality of life of our customers.

We are self-sufficient in our production processes since we proudly manufacture most of the structural components that make up our products guaranteeing the highest quality, safety, and comfort in each of them.



# Quality certifications



Decide with Confidence

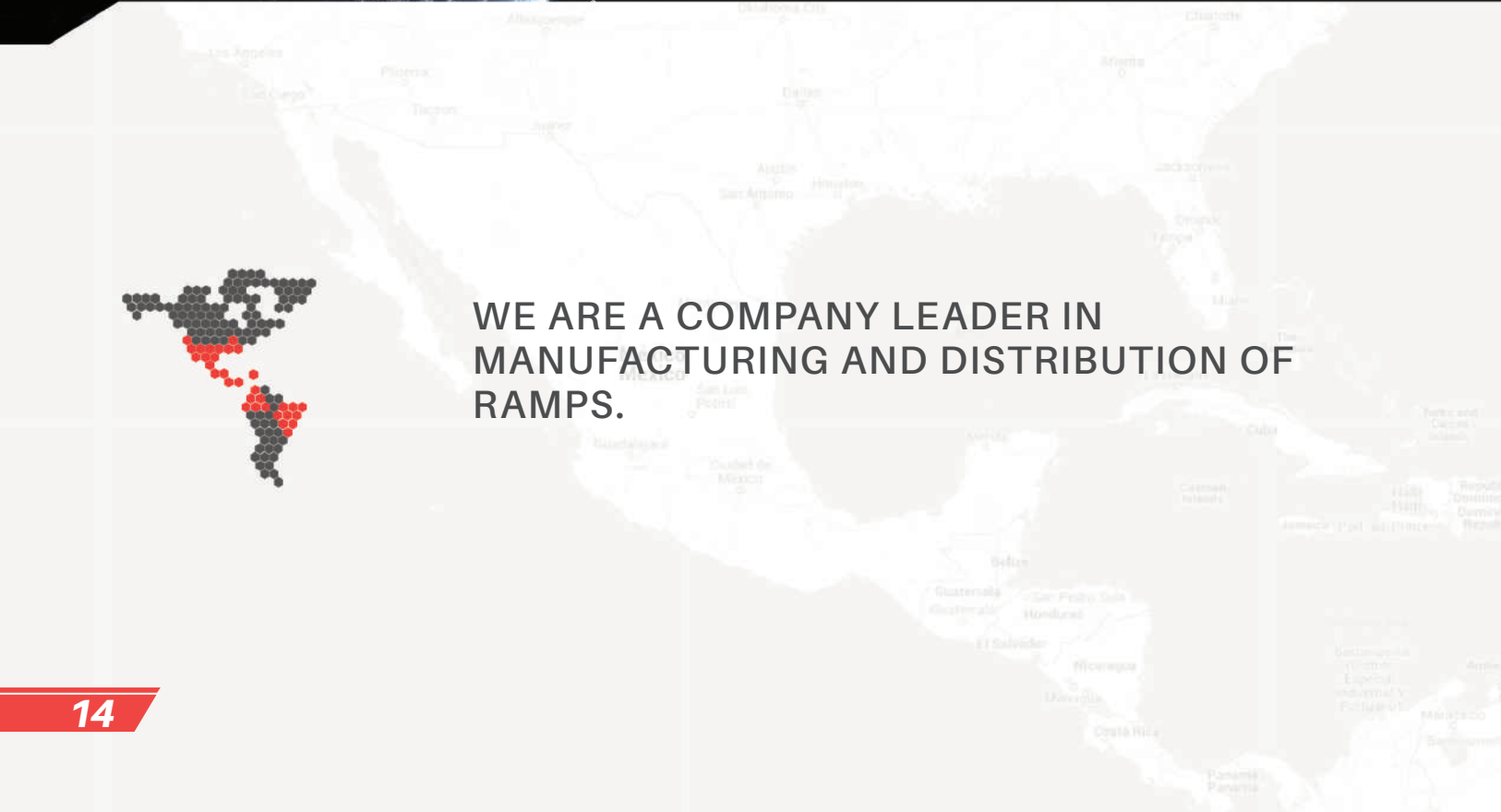


UND. LAB. INC CLFD  
ANSI/NSF 61 - 1999 6R21  
MAX USE TEMP 30 C

# Coverage area

More than 45,000 pieces of equipment manufactured and installed are a guarantee of satisfied customers for the quality of our service and production.

We are supported by more than 30 years of experience and commitment that distinguishes us as a successful company.



WE ARE A COMPANY LEADER IN  
MANUFACTURING AND DISTRIBUTION OF  
RAMPS.



# Installed Ramps



## Installed Equipment

more than 45,000

amps installed throughout the Mexican republic, Central, and North America

**We are a national leader  
in the manufacture,  
installation, and  
distribution of car lifts.**



**PARKING**  
RHINO LIFT

**PARKING**  
RHINO LIFT

Contact:  
**(877) 364-6463 / sales@rhinolifts.us**

Rhino Lifts USA  
PO BOX 80832  
Las Vegas, NV 89180  
1586 N Goldenrod Road, in Orlando, Florida

[rhinolifts.com](http://rhinolifts.com)

